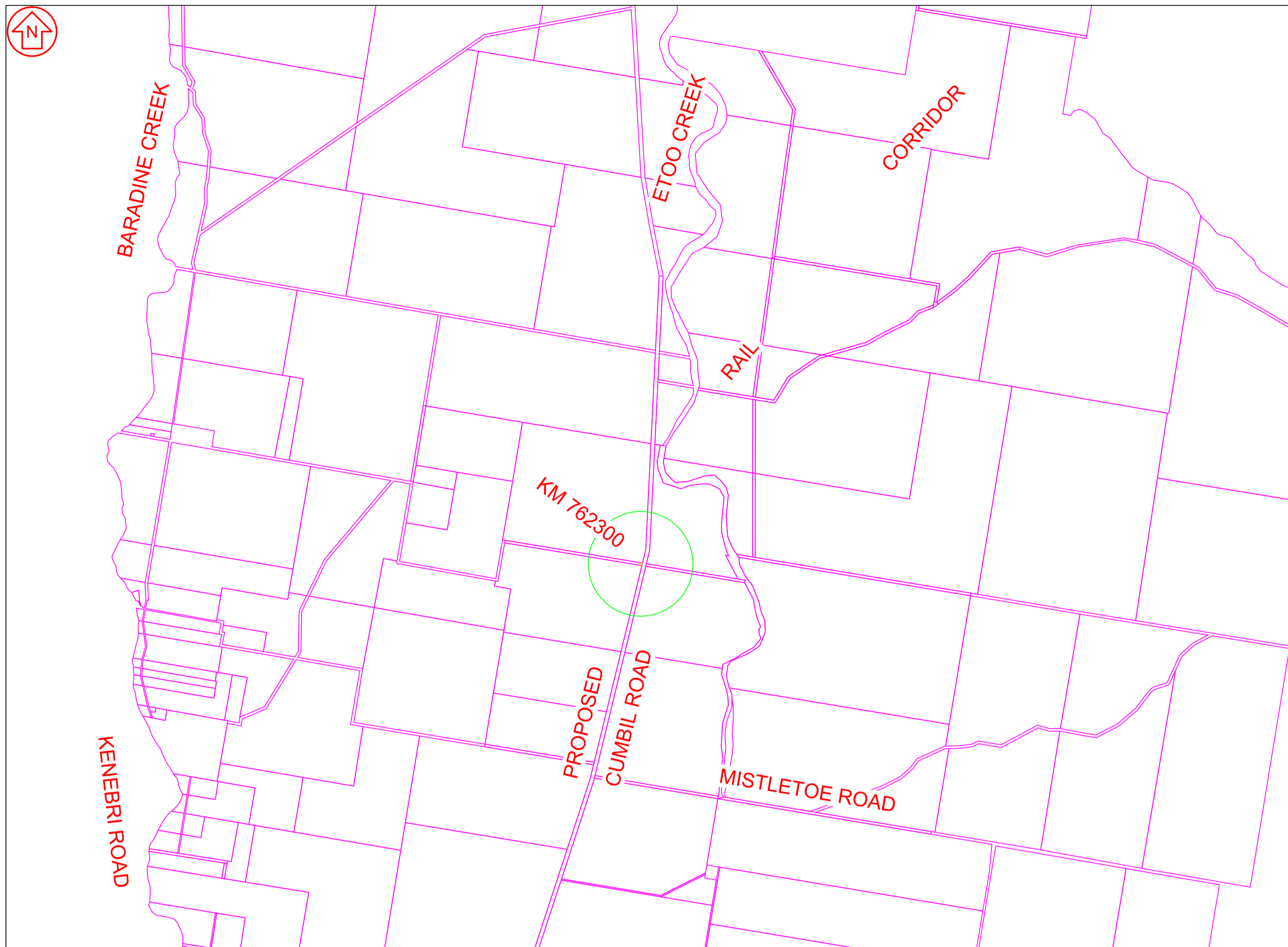


DRAWN TO AS1100
 DO NOT SCALE
 ALL DIMENSIONS IN MM UNLESS STATED OTHERWISE
 DIMENSIONS AND AREAS SHOWN ARE SUBJECT TO FINAL SURVEY. DIMENSIONS AND AREAS SHOWN HAVE BEEN ROUNDED.



▬ PERMANENT ACQUISITION AREA
 ▬ LAND NOT AFFECTED BY PROJECT
 ▬ CADASTRAL BOUNDARIES
 (A) - m²/ha AREA OF PERMANENT ROAD ACQUISITION
▬ PERMANENT UTILITY EASEMENT AREA
▬ PERMANENT ACCESS EASEMENT AREA
▬ EASEMENTS

GDA94(2010) z55

© [2021] Australian Rail Track Corporation Ltd.
 Drawing standard in accordance with EGP-04-01 & EGP-04-02

Used on / Next higher assembly:	
Filename:	Alternate DMS number:

Rev	Date	Revision Description	Designed	Checked	Ind. Rev.	Approved	Accepted
1	10/11/21	Metadata correlation					
0	20/08/21	Update plan to SACM210409 & LAB210810					
C	22/04/21	Amend Acq to S3z6 SACM210419 & LAB210409					
B	16/03/20	Revised Corridor Boundary - Aconex IR2500-GCOR-001896					
A	14/02/20	PLACEHOLDER TEMPLATE SETUP					

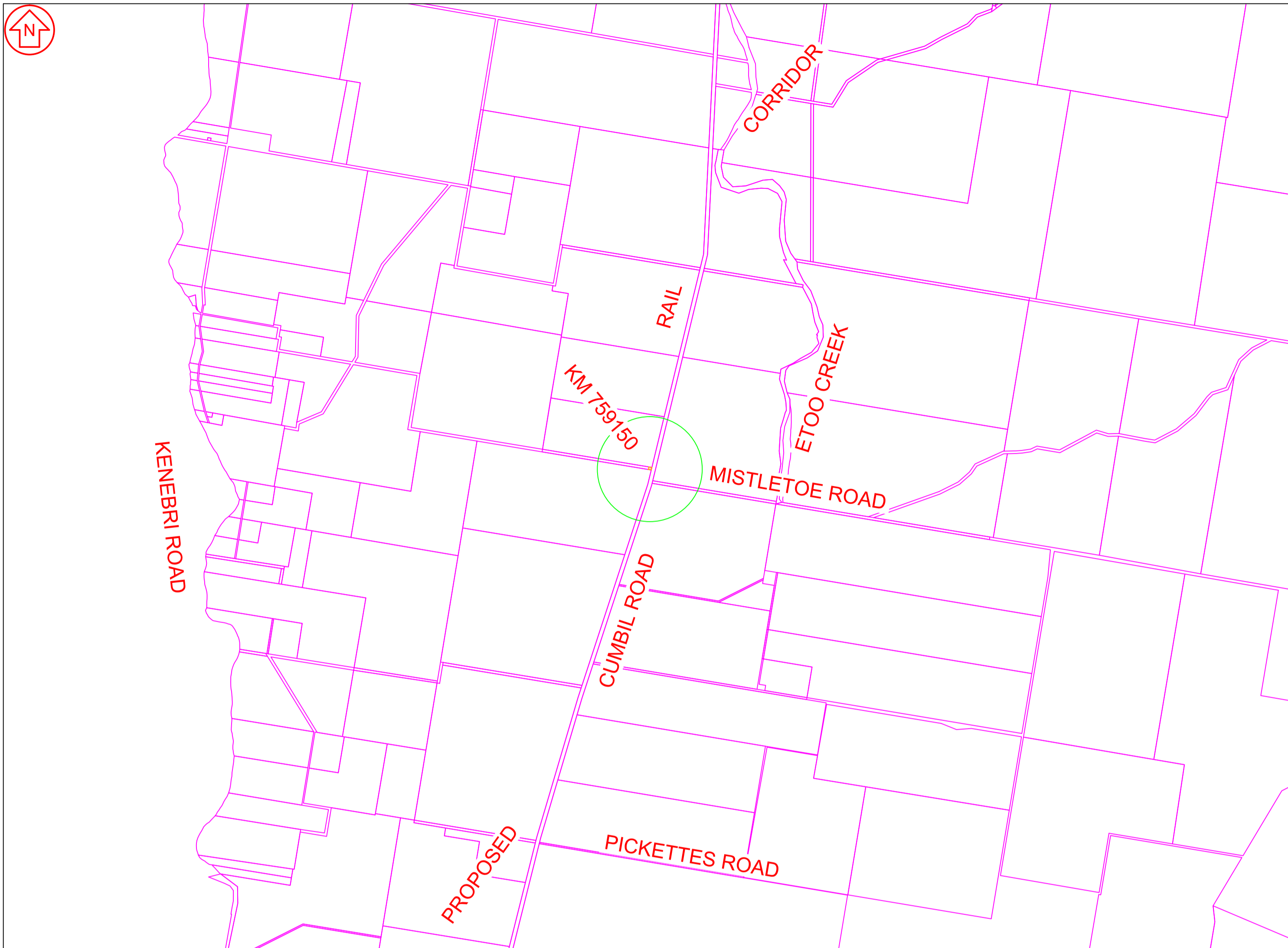
Designing Company:		ARTC ACCEPTANCE	
Designed	Approved By	Accepted By	
Checked			
Ind.Rev. Company	Ind.Rev. Name	Signed:	Signed:
Ind.Review Signature	Approval Date	Acceptance Date	

INLAND RAIL
 2-0000-250-PLA-00-PN-0367
 PROPERTY ACQUISITION PLAN
 PVPRID9999793
 ROAD KM762300

Sheet No. 1 of 1
 Scale: 1:
 SHEET SIZE A1

1 2 3 4 5 6 7 8

DO NOT SCALE ALL DIMENSIONS IN MM UNLESS STATED OTHERWISE DIMENSIONS AND AREAS SHOWN ARE SUBJECT TO FINAL SURVEY. DIMENSIONS AND AREAS SHOWN HAVE BEEN ROUNDED.



PERMANENT ACQUISITION AREA LAND NOT AFFECTED BY PROJECT CADASTRAL BOUNDARIES (A) - m2/ha AREA OF PERMANENT ROAD ACQUISITION
 PERMANENT UTILITY EASEMENT AREA PERMANENT ACCESS EASEMENT AREA EASEMENTS

GDA94(2010) z55

© [2021] Australian Rail Track Corporation Ltd.
 Drawing standard in accordance with EGP-04-01 & EGP-04-02

Used on / Next higher assembly:	
Filename:	Alternate DMS number:

Rev	Date	Revision Description	Designed	Checked	Ind. Rev.	Approved	Accepted
1	10/11/21	Metadata correlation					
0	20/08/21	Update plan to SACM210409 & LAB210810					
C	22/04/21	Amend Acq to S3z6 SACM210419 & LAB210409					
B	16/03/20	Revised Corridor Boundary - Aconex IR2500-GCOR-001896					
A	14/02/20	PLACEHOLDER TEMPLATE SETUP					

Designing Company:		ARTC ACCEPTANCE	
Designed	Approved By	Accepted By	
Checked			
Ind.Rev. Company	Ind.Rev. Name	Signed:	Signed:
Ind.Rev. Signature	Approval Date	Acceptance Date	

INLAND RAIL

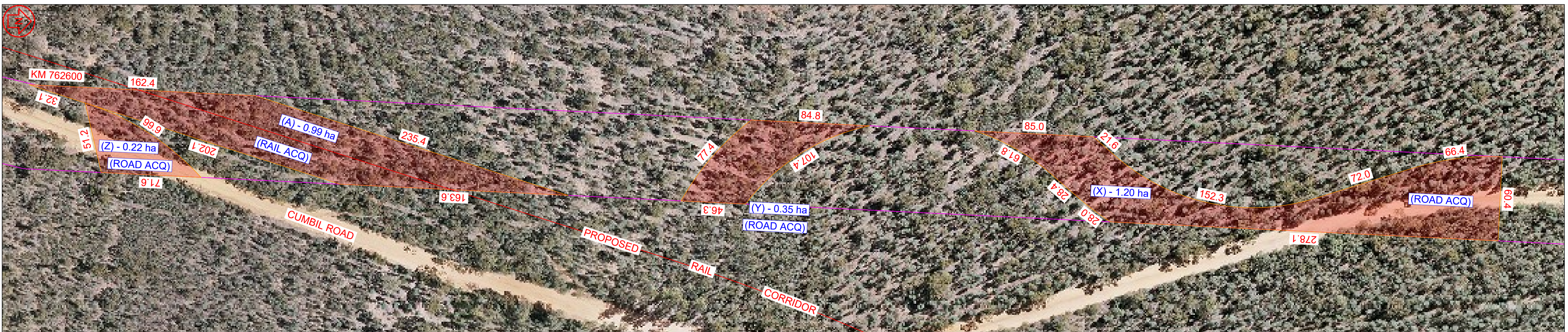
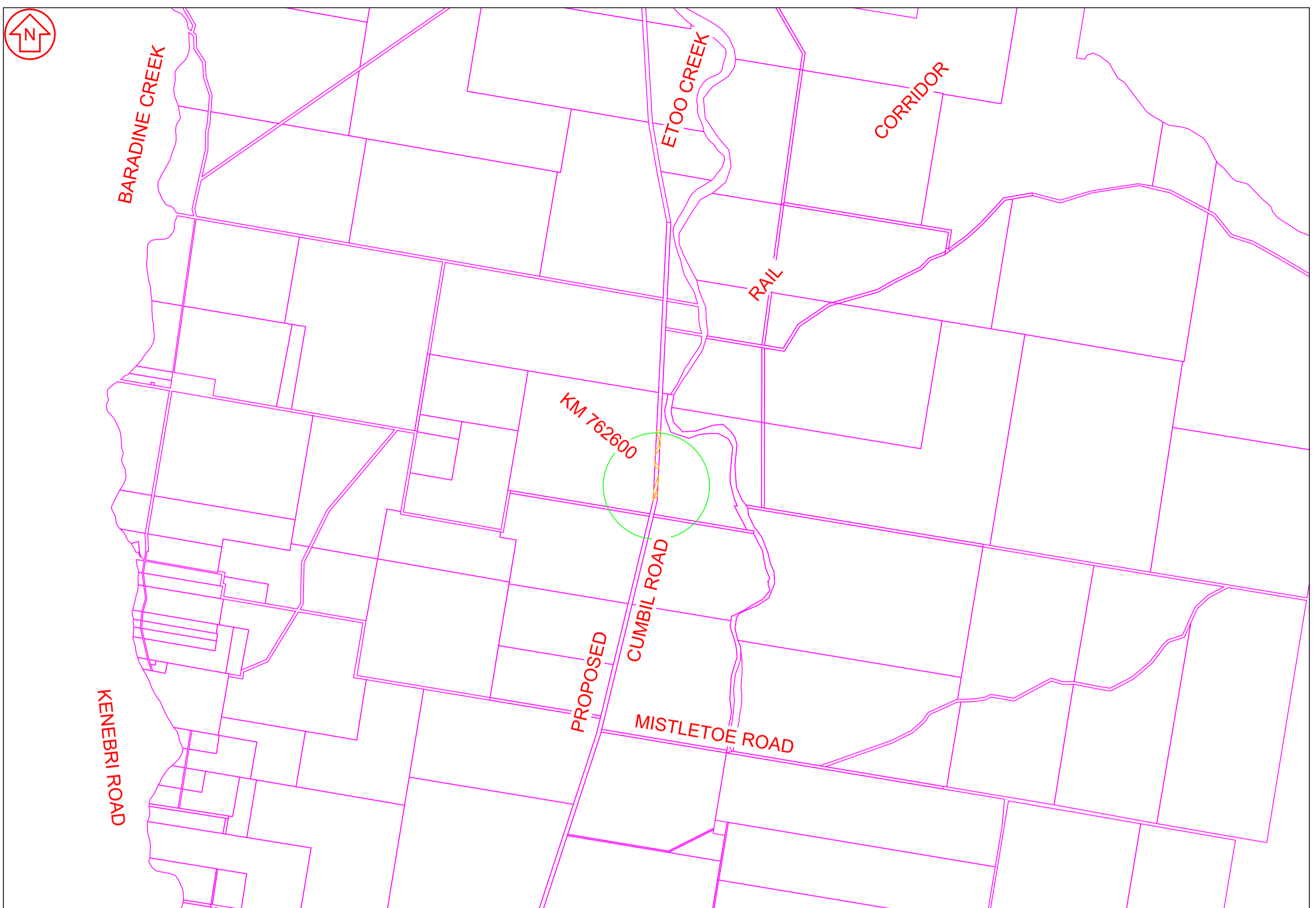
2-0000-250-PLA-00-PN-0366

PROPERTY ACQUISITION PLAN
 PVPRID9999790
 ROAD KM759150

Sheet No. 1 of 1
 Scale: 1:1
 SHEET SIZE A1

1 2 3 4 5 6 7 8

DRAWN TO AS1100
 DO NOT SCALE
 ALL DIMENSIONS IN MM UNLESS STATED OTHERWISE
 DIMENSIONS AND AREAS SHOWN ARE SUBJECT TO FINAL SURVEY. DIMENSIONS AND AREAS SHOWN HAVE BEEN ROUNDED.



▬ PERMANENT ACQUISITION AREA
 ▬ LAND NOT AFFECTED BY PROJECT
 ▬ CADASTRAL BOUNDARIES
 (A) - m2/ha AREA OF PERMANENT ROAD ACQUISITION
▬ PERMANENT UTILITY EASEMENT AREA
▬ PERMANENT ACCESS EASEMENT AREA
▬ EASEMENTS

GDA94(2010) z55

© [2021] Australian Rail Track Corporation Ltd.
 Drawing standard in accordance with EGP-04-01 & EGP-04-02

Used on / Next higher assembly:	
Filename:	Alternate DMS number:

Rev	Date	Revision Description	Designed	Checked	Ind. Rev.	Approved	Accepted
1	10/11/21	Metadata correlation					
0	20/08/21	Update plan to SACM210409 & LAB210810					
C	22/04/21	Amend Acq to S3z6 SACM210419 & LAB210409					
B	16/03/20	Revised Corridor Boundary - Aconex IR2500-GCOR-001896					
A	14/02/20	PLACEHOLDER TEMPLATE SETUP					

Designing Company:		ARTC ACCEPTANCE	
Designed	Approved By	Accepted By	
Checked			
Ind.Rev. Company	Ind.Rev. Name	Signed:	Signed:
Ind.Review Signature	Approval Date	Acceptance Date	

INLAND RAIL
 2-0000-250-PLA-00-PN-0361
 PROPERTY ACQUISITION PLAN
 PVPRID9999784
 CUMBIL ROAD

Sheet No. 1 of 1
 Scale: 1:
 SHEET SIZE A1

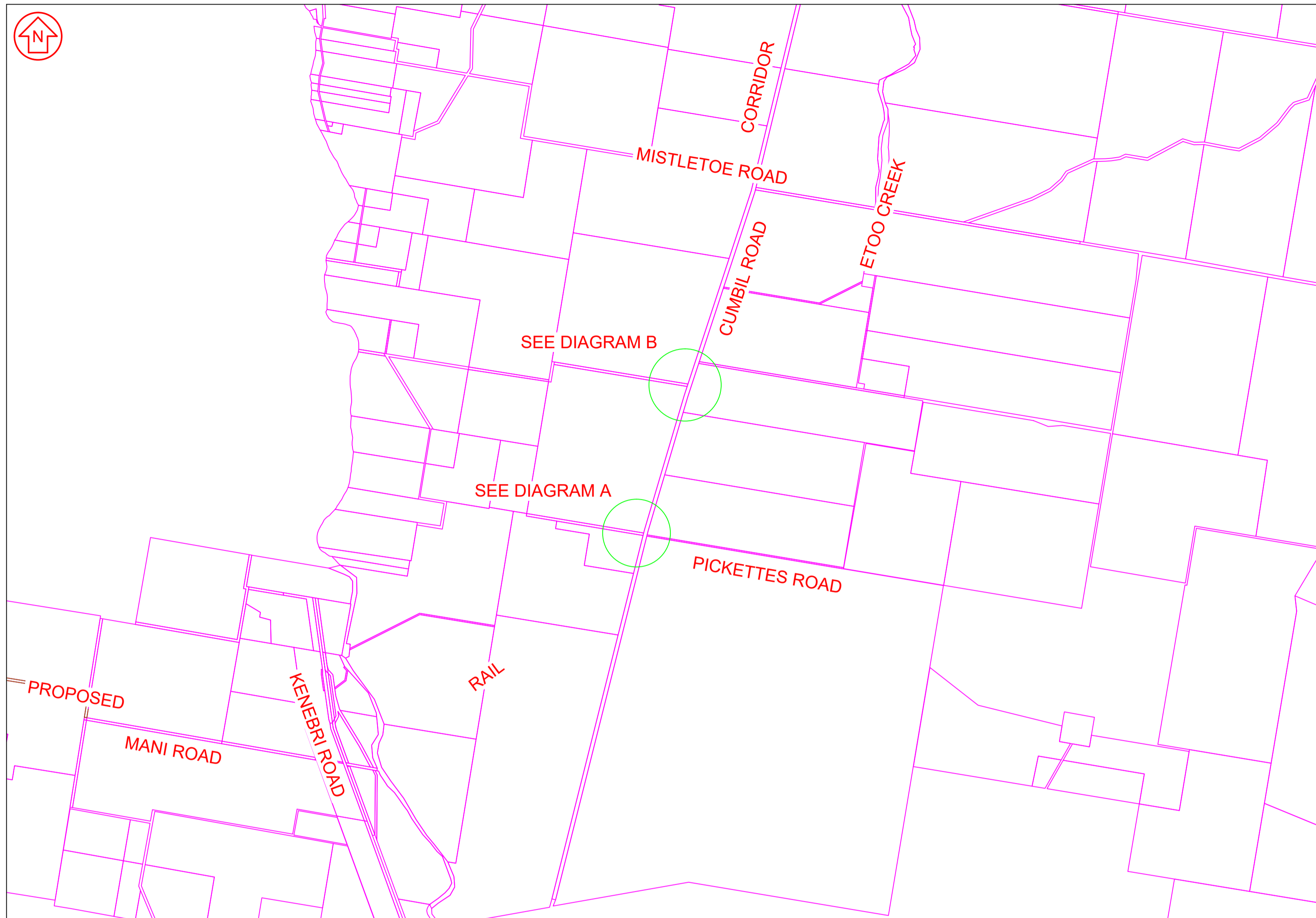
1 2 3 4 5 6 7 8

DRAWN TO AS1100

DO NOT SCALE

ALL DIMENSIONS IN MM UNLESS STATED OTHERWISE

DIMENSIONS AND AREAS SHOWN ARE SUBJECT TO FINAL SURVEY. DIMENSIONS AND AREAS SHOWN HAVE BEEN ROUNDED.



PERMANENT ACQUISITION AREA
 LAND NOT AFFECTED BY PROJECT
 CADASTRAL BOUNDARIES
 (A) - m²/ha AREA OF PERMANENT ROAD ACQUISITION
 PERMANENT UTILITY EASEMENT AREA
 PERMANENT ACCESS EASEMENT AREA
 EASEMENTS

GDA94(2010) z55

© [2021] Australian Rail Track Corporation Ltd.

Drawing standard in accordance with EGP-04-01 & EGP-04-02

Used on / Next higher assembly:	
Filename:	Alternate DMS number:

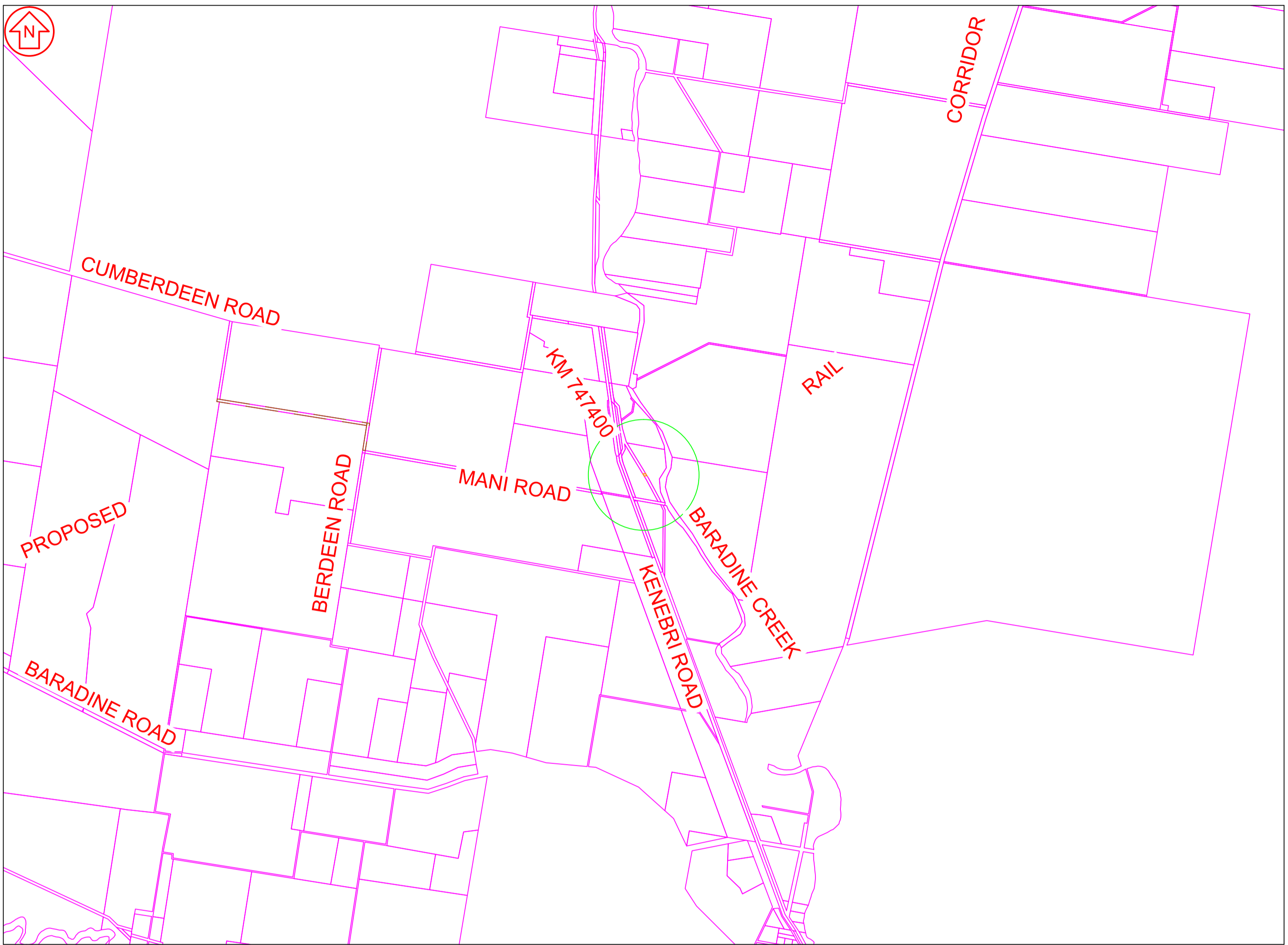
Rev	Date	Revision Description	Designed	Checked	Ind. Rev.	Approved	Accepted
1	10/11/21	Metadata correlation					
0	20/08/21	Update plan to SACM210409 & LAB210810					
C	22/04/21	Amend Acq to S3z6 SACM210419 & LAB210409					
B	16/03/20	Revised Corridor Boundary - Aconex IR2500-GCOR-001896					
A	14/02/20	PLACEHOLDER TEMPLATE SETUP					

Designing Company:		ARTC ACCEPTANCE	
Designed	Approved By	Accepted By	
Checked			
Ind.Rev. Company	Ind.Rev. Name	Signed:	Signed:
Ind.Review Signature	Approval Date	Acceptance Date	

INLAND RAIL
 2-0000-250-PLA-00-PN-0360
 PROPERTY ACQUISITION PLAN
 PVPRID9999783
 ROAD KM753200

Sheet No. 1 of 1
 Scale: 1:
 SHEET SIZE A1

DRAWN TO AS1100
 DO NOT SCALE
 ALL DIMENSIONS IN MM UNLESS STATED OTHERWISE
 DIMENSIONS AND AREAS SHOWN ARE SUBJECT TO FINAL SURVEY. DIMENSIONS AND AREAS SHOWN HAVE BEEN ROUNDED.



PERMANENT ACQUISITION AREA
 PERMANENT UTILITY EASEMENT AREA
 LAND NOT AFFECTED BY PROJECT
 PERMANENT ACCESS EASEMENT AREA
 CADASTRAL BOUNDARIES
 EASEMENTS
 (A) - m²/ha AREA OF PERMANENT ROAD ACQUISITION

GDA94(2010) z55

© [2021] Australian Rail Track Corporation Ltd.
 Drawing standard in accordance with EGP-04-01 & EGP-04-02

Used on / Next higher assembly:	
Filename:	Alternate DMS number:

Rev	Date	Revision Description	Designed	Checked	Ind. Rev.	Approved	Accepted
1	03/11/21	Metadata correlation					
0	24/08/21	Update to SACM210412 & LAB210810					
B	16/03/20	Revised Corridor Boundary - Aconex IR2500-GCOR-001896					
A	14/02/20	PLACEHOLDER TEMPLATE SETUP					

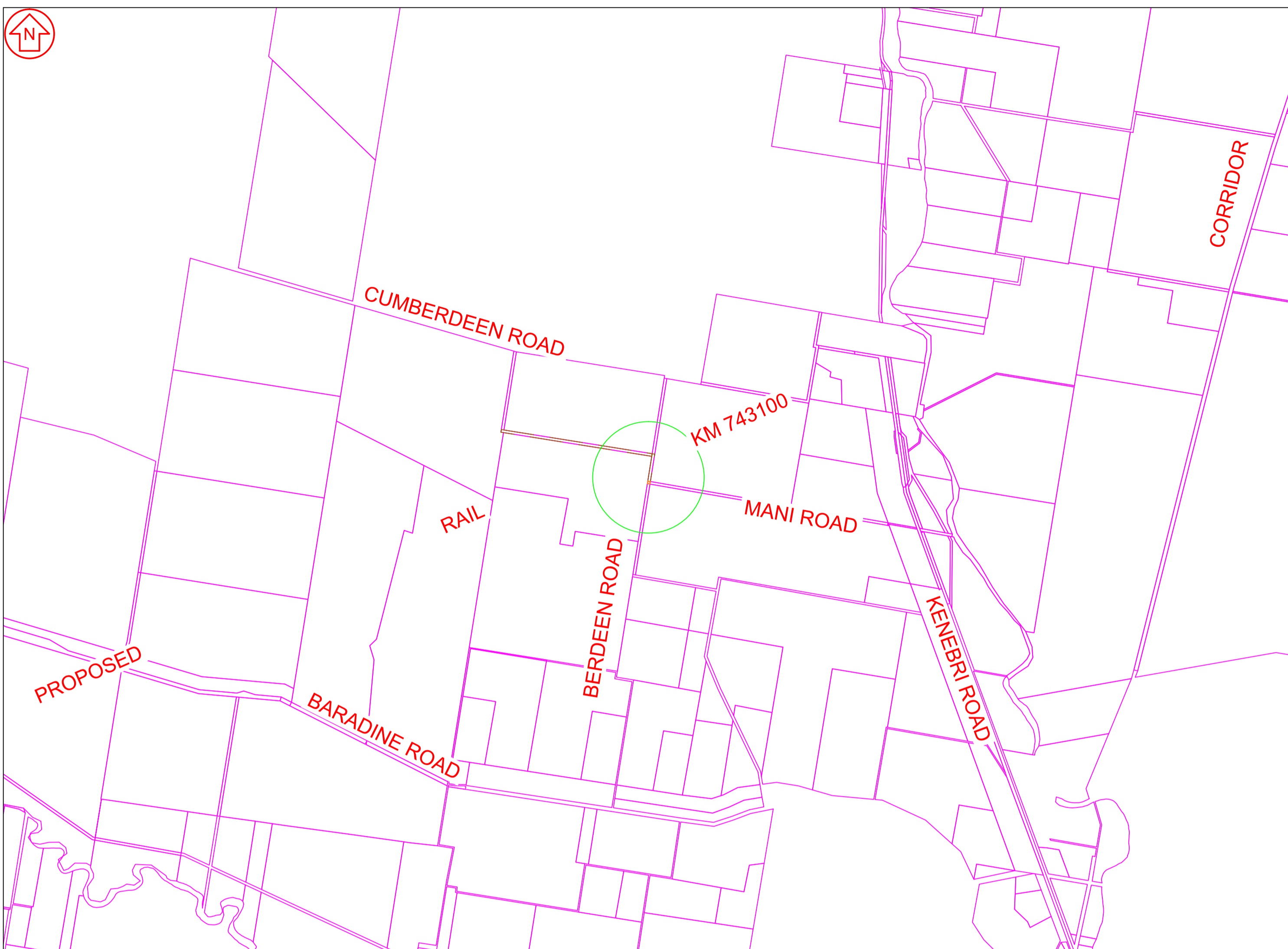
Designing Company:		ARTC ACCEPTANCE	
Designed	Approved By	Accepted By	
Checked			
Ind.Rev. Company	Ind.Rev. Name	Signed:	Signed:
Ind.Review Signature	Approval Date	Acceptance Date	

INLAND RAIL
 2-0000-250-PLA-00-PN-0355
 PROPERTY ACQUISITION PLAN
 PVPRID9999779
 ROAD KM747400

Sheet No. 1 of 1
 Scale: 1:
 SHEET SIZE A1

DRAWN TO AS1100
DO NOT SCALE
ALL DIMENSIONS IN MM UNLESS STATED OTHERWISE

DIMENSIONS AND AREAS SHOWN ARE SUBJECT TO FINAL SURVEY.
DIMENSIONS AND AREAS SHOWN HAVE BEEN ROUNDED.



▬ PERMANENT ACQUISITION AREA ▬ LAND NOT AFFECTED BY PROJECT ▬ CADASTRAL BOUNDARIES (A) - m²/ha AREA OF PERMANENT ROAD ACQUISITION
▬ PERMANENT UTILITY EASEMENT AREA ▬ PERMANENT ACCESS EASEMENT AREA - - - EASEMENTS

GDA94(2010) z55

© [2021] Australian Rail Track Corporation Ltd.
Drawing standard in accordance with EGP-04-01 & EGP-04-02

Used on / Next higher assembly:	
Filename:	Alternate DMS number:

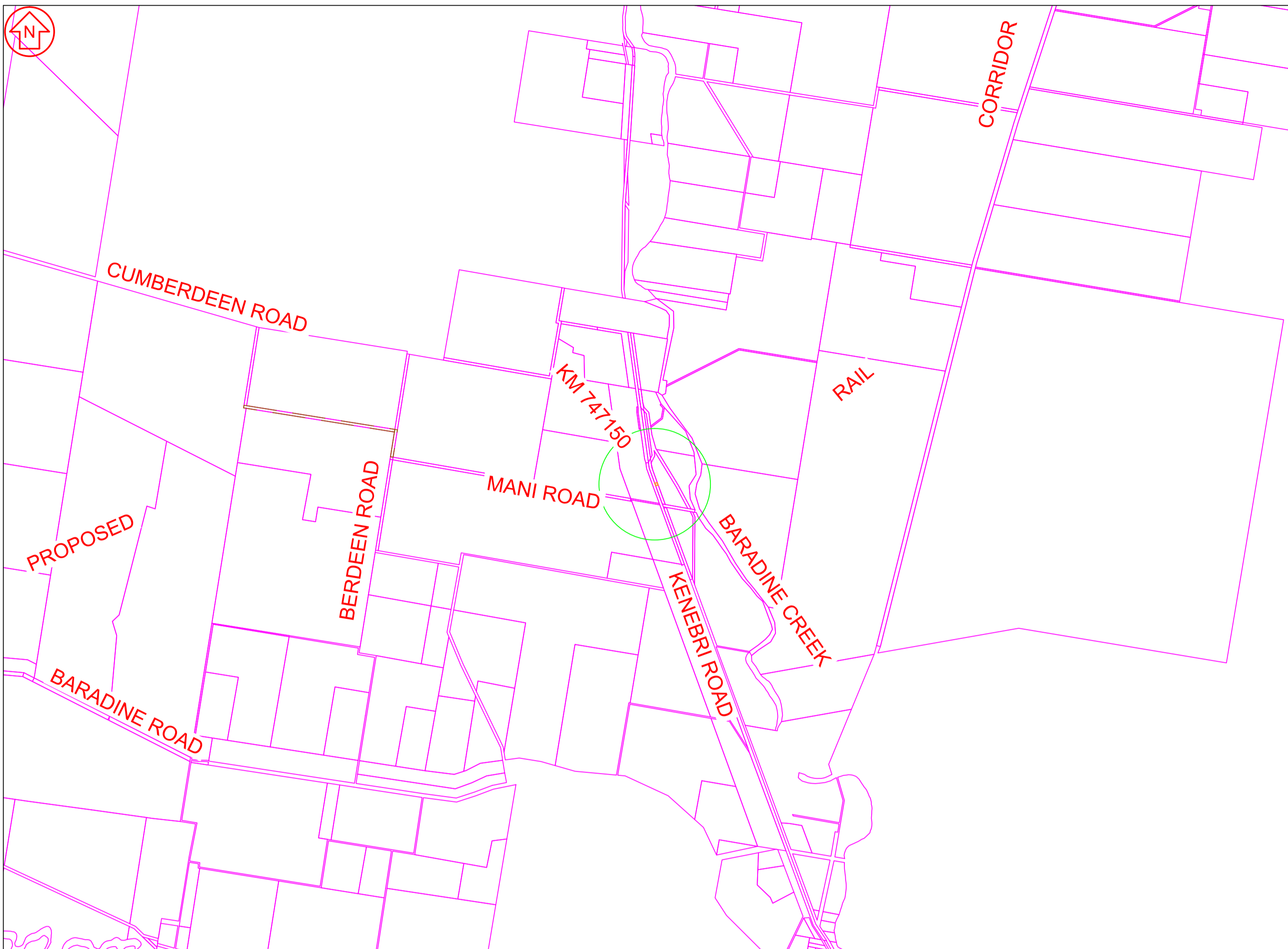
Rev	Date	Revision Description	Designed	Checked	Ind. Rev.	Approved	Accepted
1	03/11/21	Metadata correlation					
0	24/08/21	Plan number reinstated for KM743100 per SACM210412 & LAB210810					
B	16/03/20	Revised Corridor Boundary - Aconex IR2500-GCOR-001896					
A	14/02/20	PLACEHOLDER TEMPLATE SETUP					

Designing Company:		ARTC ACCEPTANCE	
Designed	Approved By	Accepted By	
Checked			
Ind.Rev. Company	Ind.Rev. Name	Signed:	Signed:
Ind.Review Signature	Approval Date	Acceptance Date	

INLAND RAIL
 2-0000-250-PLA-00-PN-0354
 PROPERTY ACQUISITION PLAN
 PVPRID9999778
 BERDEEN ROAD KM743100

Sheet No. 1 of 1
 Scale: 1:
 SHEET SIZE A1

DRAWN TO AS1100
 DO NOT SCALE
 ALL DIMENSIONS IN MM UNLESS STATED OTHERWISE
 DIMENSIONS AND AREAS SHOWN ARE SUBJECT TO FINAL SURVEY. DIMENSIONS AND AREAS SHOWN HAVE BEEN ROUNDED.



PERMANENT ACQUISITION AREA
 LAND NOT AFFECTED BY PROJECT
 PERMANENT UTILITY EASEMENT AREA
 PERMANENT ACCESS EASEMENT AREA
 CADASTRAL BOUNDARIES
 (A) - m²/ha AREA OF PERMANENT ROAD ACQUISITION
 EASEMENTS

GDA94(2010) z55

© [2021] Australian Rail Track Corporation Ltd.
 Drawing standard in accordance with EGP-04-01 & EGP-04-02

Used on / Next higher assembly:
 Filename:
 Alternate DMS number:

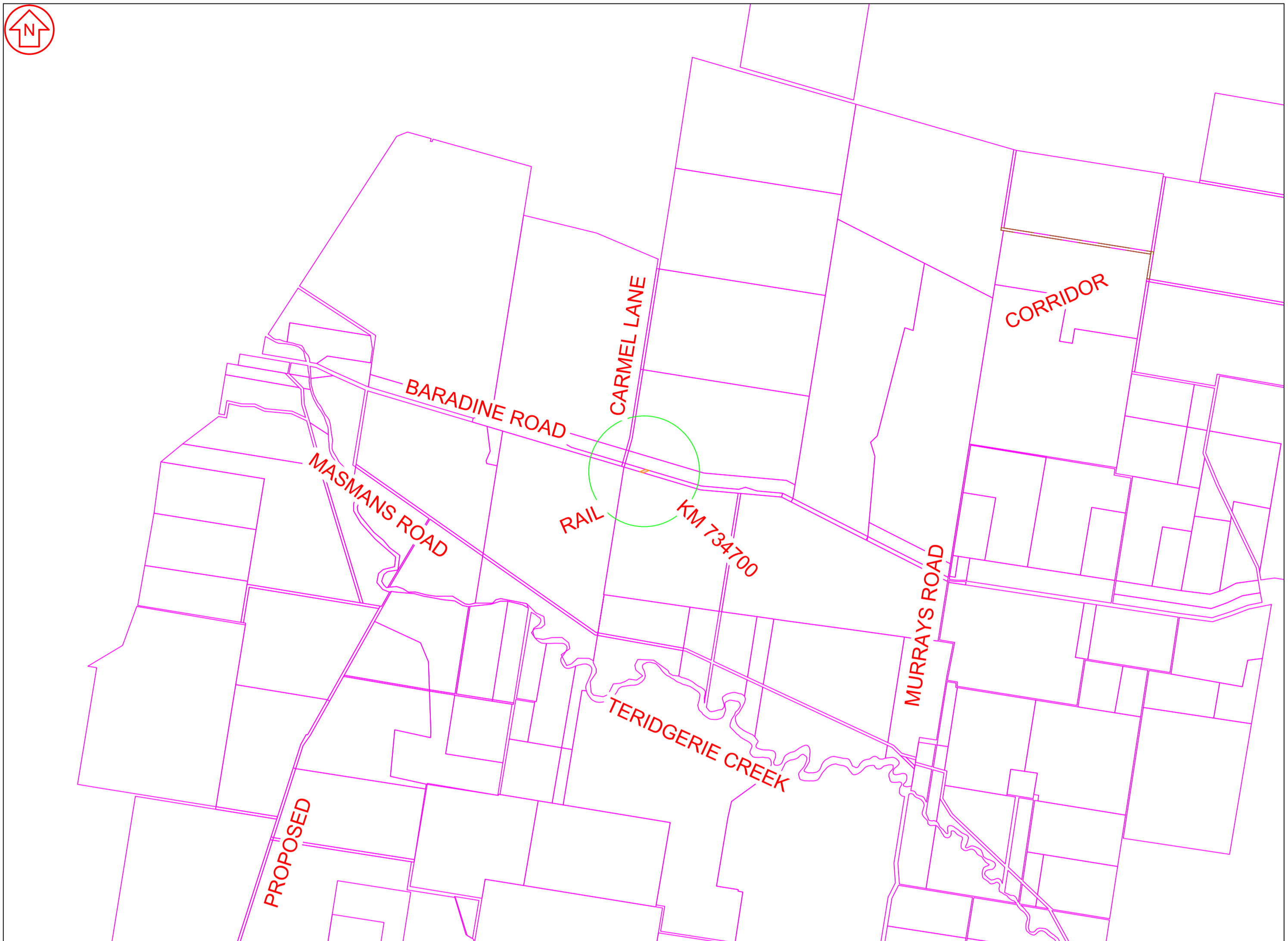
Rev	Date	Revision Description	Designed	Checked	Ind. Rev.	Approved	Accepted
1	03/11/21	Metadata correlation					
0	24/08/21	Update to SACM210412 & LAB210810					
B	16/03/20	Revised Corridor Boundary - Aconex IR2500-GCOR-001896					
A	14/02/20	PLACEHOLDER TEMPLATE SETUP					

Designing Company:		ARTC ACCEPTANCE	
Designed	Approved By	Accepted By	
Checked			
Ind.Rev. Company	Ind.Rev. Name	Signed:	Signed:
Ind.Review Signature	Approval Date	Acceptance Date	

INLAND RAIL
 2-0000-250-PLA-00-PN-0351
 SHEET No. 1 of 1
 SHEET SIZE A1
 Scale: 1:
PROPERTY ACQUISITION PLAN
 PVPRID9999777
 KENEBRI ROAD KM747150

1 2 3 4 5 6 7 8

DO NOT SCALE ALL DIMENSIONS IN MM UNLESS STATED OTHERWISE DIMENSIONS AND AREAS SHOWN ARE SUBJECT TO FINAL SURVEY. DIMENSIONS AND AREAS SHOWN HAVE BEEN ROUNDED.



PERMANENT ACQUISITION AREA LAND NOT AFFECTED BY PROJECT CADASTRAL BOUNDARIES (A) - m2/ha AREA OF PERMANENT ROAD ACQUISITION
 PERMANENT UTILITY EASEMENT AREA PERMANENT ACCESS EASEMENT AREA EASEMENTS

GDA94(2010) z55

© [2021] Australian Rail Track Corporation Ltd.
 Drawing standard in accordance with EGP-04-01 & EGP-04-02

Used on / Next higher assembly:
 Filename: Alternate DMS number:

Rev	Date	Revision Description	Designed	Checked	Ind. Rev.	Approved	Accepted
1	03/11/21	Metadata correlation					
0	24/08/21	Update to SACM210412 & LAB210810					
B	16/03/20	Revised Corridor Boundary - Aconex IR2500-GCOR-001896					
A	14/02/20	PLACEHOLDER TEMPLATE SETUP					

Designing Company:		ARTC ACCEPTANCE	
Designed	Approved By	Accepted By	
Checked			
Ind.Rev. Company	Ind.Rev. Name	Signed:	Signed:
Ind.Review Signature	Approval Date	Acceptance Date	

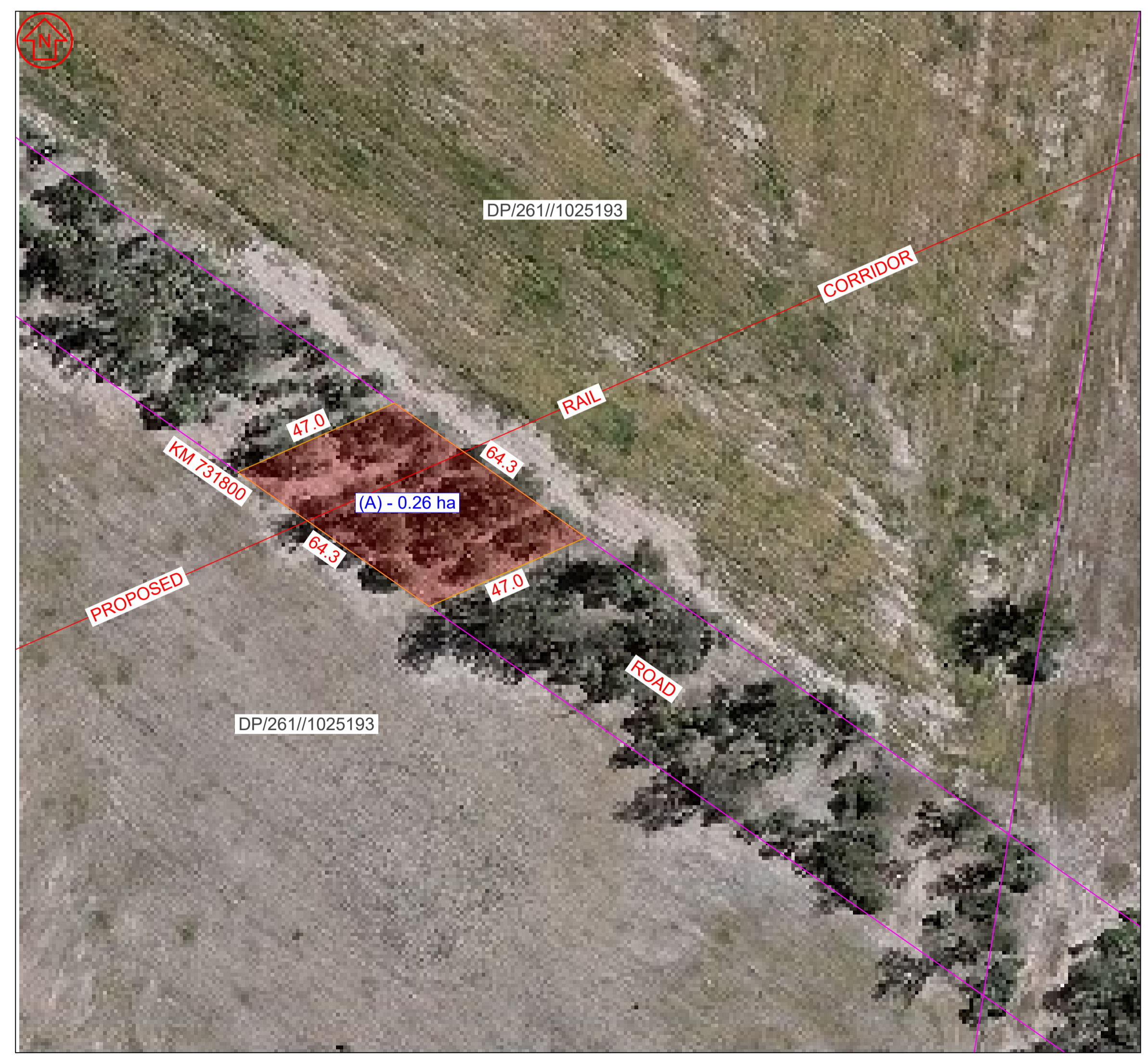
INLAND RAIL 2-0000-250-PLA-00-PN-0337

Sheet No. 1 of 1
 Scale: 1:
 SHEET SIZE A1

PROPERTY ACQUISITION PLAN
 PVPRID9999772
 BARADINE ROAD KM734700

1 2 3 4 5 6 7 8

DRAWN TO AS1100
 DO NOT SCALE
 ALL DIMENSIONS IN MM UNLESS STATED OTHERWISE
 DIMENSIONS AND AREAS SHOWN ARE SUBJECT TO FINAL SURVEY. DIMENSIONS AND AREAS SHOWN HAVE BEEN ROUNDED.



PERMANENT ACQUISITION AREA
 LAND NOT AFFECTED BY PROJECT
 CADASTRAL BOUNDARIES
 EASEMENTS
 PERMANENT UTILITY EASEMENT AREA
 PERMANENT ACCESS EASEMENT AREA
 (A) - m2/ha AREA OF PERMANENT ROAD ACQUISITION

GDA94(2010) z55

© [2021] Australian Rail Track Corporation Ltd.
 Drawing standard in accordance with EGP-04-01 & EGP-04-02

Used on / Next higher assembly:	
Filename:	Alternate DMS number:

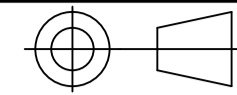
Rev	Date	Revision Description	Designed	Checked	Ind. Rev.	Approved	Accepted
2	09/12/21	Update to revised CIZ211124 for drainage control impacts					
1	03/11/21	Metadata correlation					
0	24/08/21	Update to SACM210412 & LAB210810					
B	16/03/20	Revised Corridor Boundary - Aconex IR2500-GCOR-001896					
A	14/02/20	PLACEHOLDER TEMPLATE SETUP					

Designing Company:		ARTC ACCEPTANCE	
Designed	Approved By	Accepted By	
Checked			
Ind.Rev. Company	Ind.Rev. Name	Signed:	Signed:
Ind.Review Signature	Approval Date	Acceptance Date	

INLAND RAIL
 2-0000-250-PLA-00-PN-0329
 PROPERTY ACQUISITION PLAN
 PVPRID9999768
 ROAD KM731800

Sheet No. 1 of 1
 Scale: 1:
 SHEET SIZE A1

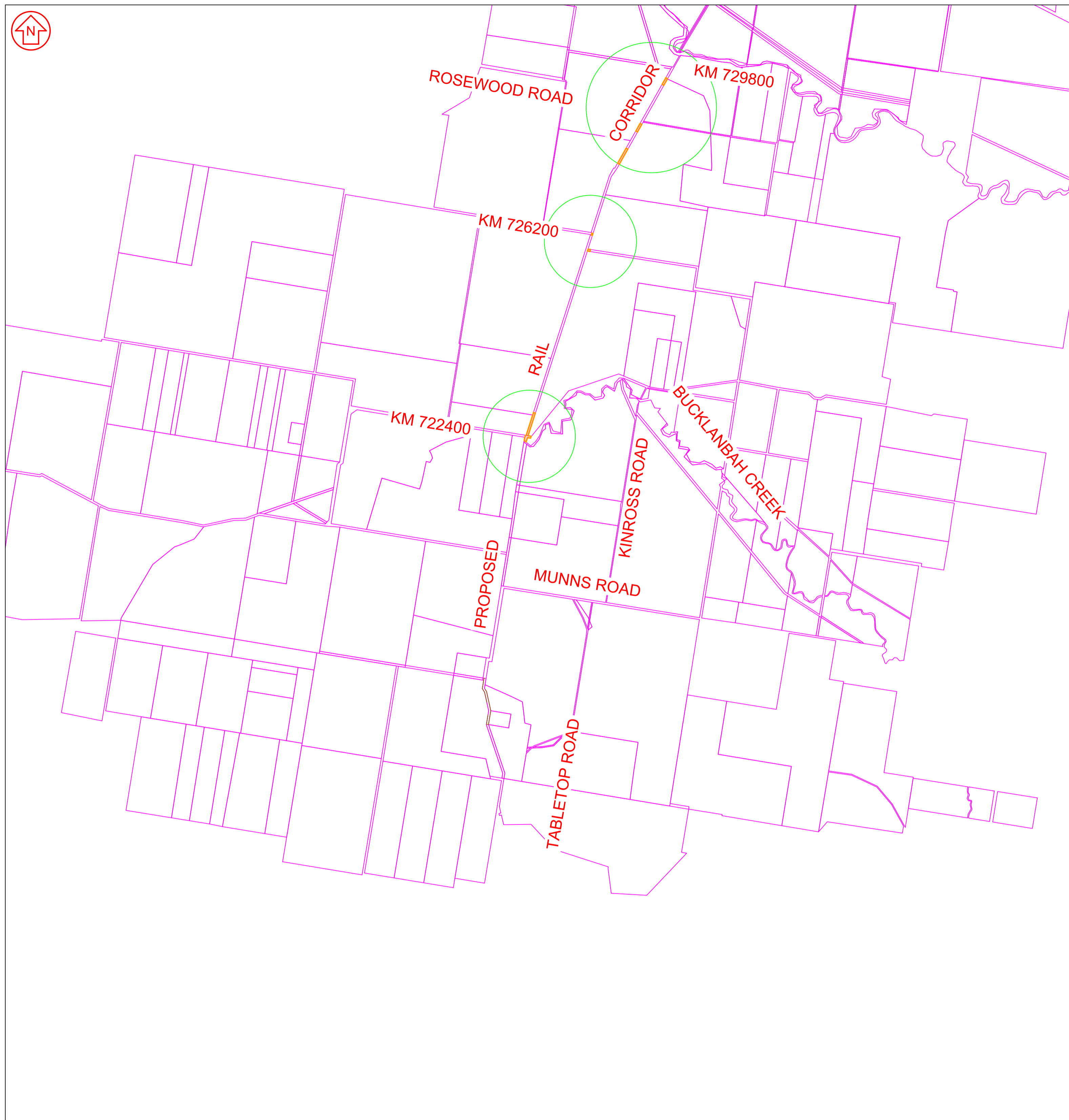
DRAWN TO AS1100



DO NOT SCALE

ALL DIMENSIONS IN MM UNLESS STATED OTHERWISE

DIMENSIONS AND AREAS SHOWN ARE SUBJECT TO FINAL SURVEY. DIMENSIONS AND AREAS SHOWN HAVE BEEN ROUNDED.



- PERMANENT ACQUISITION AREA
- LAND NOT AFFECTED BY PROJECT
- CADASTRAL BOUNDARIES
- (A) - m2/ha AREA OF PERMANENT ROAD ACQUISITION
- PERMANENT UTILITY EASEMENT AREA
- PERMANENT ACCESS EASEMENT AREA
- EASEMENTS

GDA94(2010) z55

© [2021] Australian Rail Track Corporation Ltd.
Drawing standard in accordance with EGP-04-01 & EGP-04-02

Used on / Next higher assembly:	
Filename:	Alternate DMS number:

Rev	Date	Revision Description	Designed	Checked	Ind. Rev.	Approved	Accepted
2	15/12/21	Update to revised CIZ211124 for drainage control & presumptive title impacts					
1	05/11/21	Metadata correlation					
0	20/09/21	Update to SACM 210628 & LAB 210810					
B	16/03/20	Revised Corridor Boundary - Aconex IR2500-GCOR-001896					
A	14/02/20	PLACEHOLDER TEMPLATE SETUP					

Designing Company:		ARTC ACCEPTANCE	
Designed	Approved By	Accepted By	
Checked			
Ind.Rev. Company	Ind.Rev. Name	Signed:	Signed:
Ind.Review Signature	Approval Date	Acceptance Date	

Sheet No. 1 of 2
Scale: 1:

INLAND RAIL
2-0000-250-PLA-00-PN-0314

PROPERTY ACQUISITION PLAN
PVPRID9999758
ROAD KM722400

1

2

3

4

5

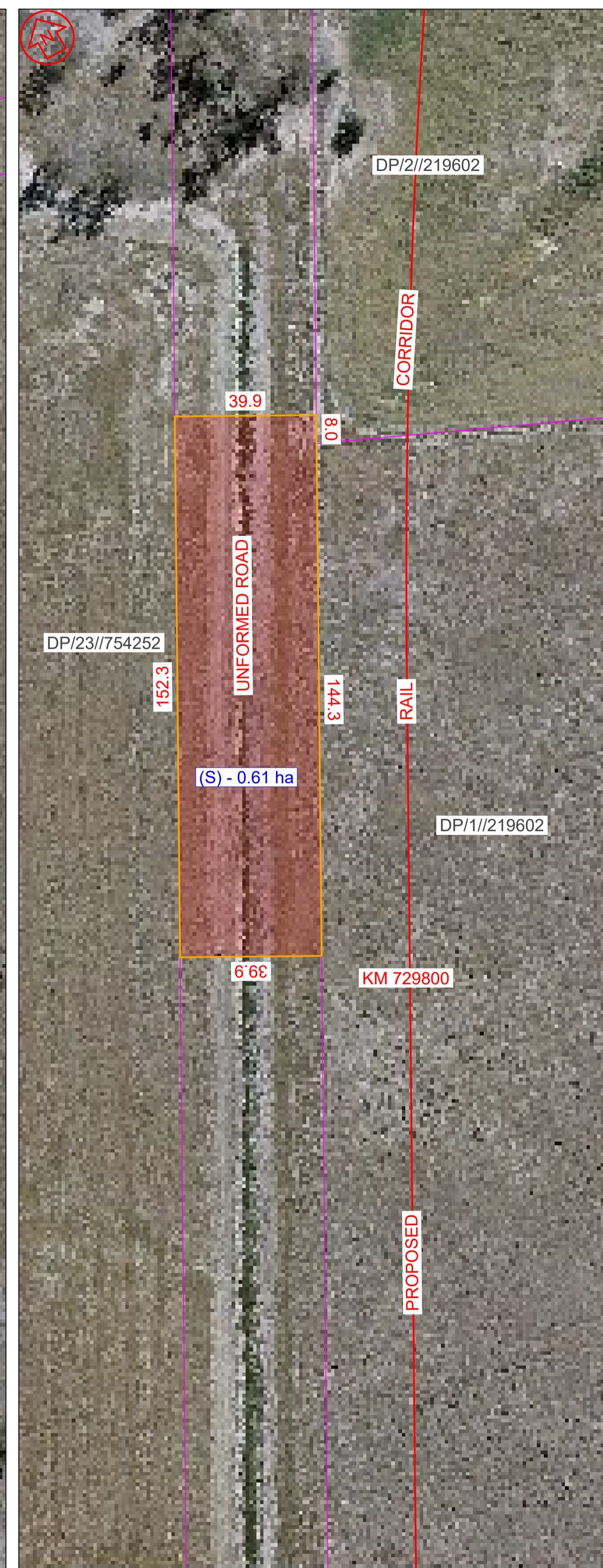
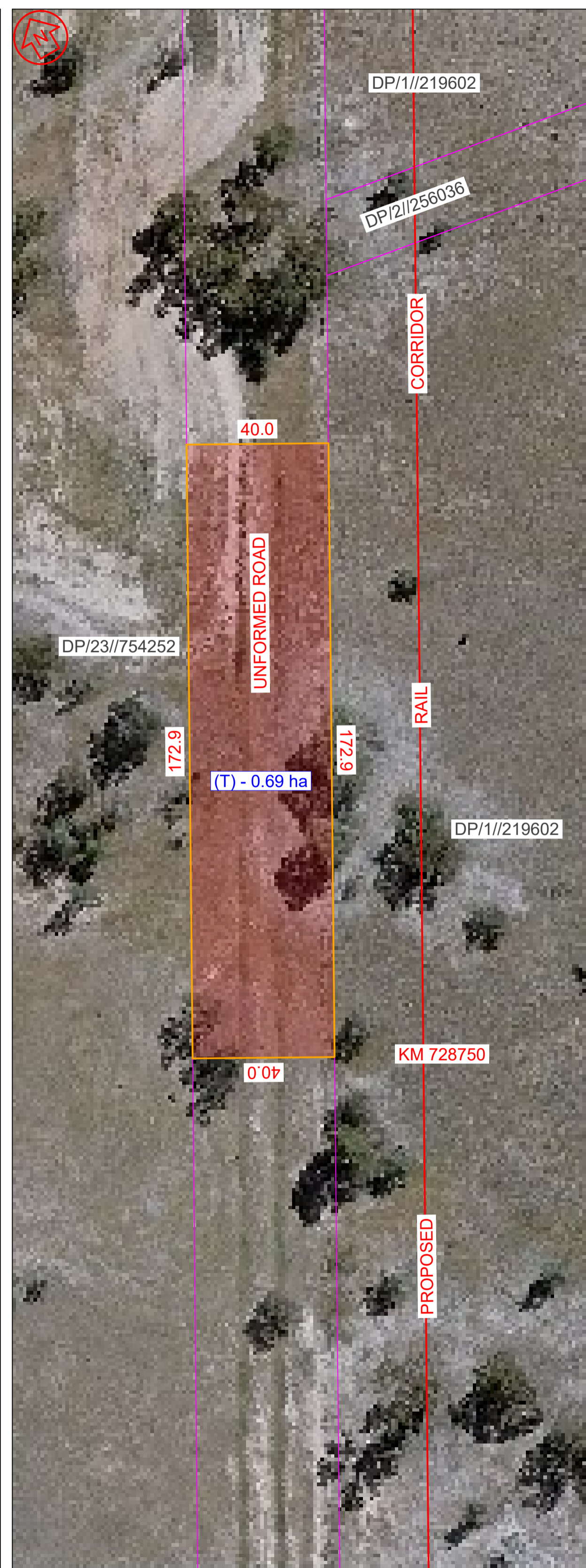
6

7

8

DRAWN TO AS1100
DO NOT SCALE
ALL DIMENSIONS IN MM UNLESS STATED OTHERWISE

DIMENSIONS AND AREAS SHOWN ARE SUBJECT TO FINAL SURVEY.
DIMENSIONS AND AREAS SHOWN HAVE BEEN ROUNDED.



PERMANENT ACQUISITION AREA
 PERMANENT UTILITY EASEMENT AREA
 LAND NOT AFFECTED BY PROJECT
 PERMANENT ACCESS EASEMENT AREA
 CADASTRAL BOUNDARIES
 EASEMENTS
 (A) - m²/ha AREA OF PERMANENT ROAD ACQUISITION

GDA94(2010) z55

© [2021] Australian Rail Track Corporation Ltd.
Drawing standard in accordance with EGP-04-01 & EGP-04-02

Used on / Next higher assembly:	
Filename:	Alternate DMS number:

Rev	Date	Revision Description	Designed	Checked	Ind. Rev.	Approved	Accepted
2	15/12/21	Update to revised CIZ211124 for drainage control & presumptive title impacts					
1	05/11/21	Metadata correlation					
0	20/09/21	Update to SACM 210628 & LAB 210810					
B	16/03/20	Revised Corridor Boundary - Aconex IR2500-GCOR-001896					
A	14/02/20	PLACEHOLDER TEMPLATE SETUP					

Designing Company:		ARTC ACCEPTANCE	
Designed	Approved By	Accepted By	
Checked			
Ind. Rev. Company	Ind. Rev. Name	Signed:	Signed:
Ind. Review Signature	Approval Date	Acceptance Date	

INLAND RAIL
 2-0000-250-PLA-00-PN-0314
 PROPERTY ACQUISITION PLAN
 PVPRID9999758
 ROAD KM722400

Sheet No. 2 of 2
 Scale: 1:
 SHEET SIZE A1